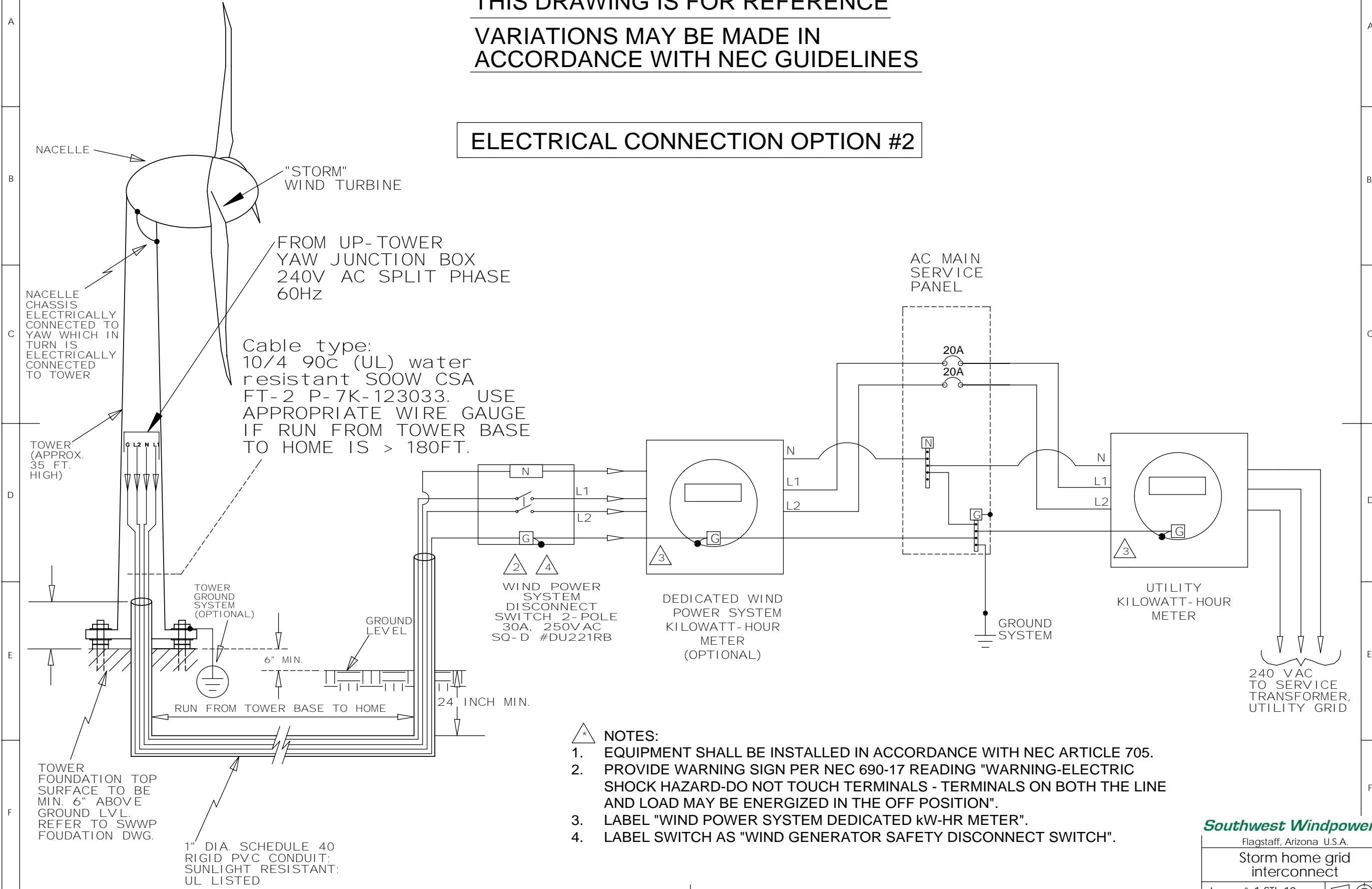




Proprietary rights are included in the information disclosed herein. This information is submitted in confidence and neither the document nor the information disclosed herein shall be reproduced or transferred to other documents for manufacturing or for any other purpose except as specifically authorized in writing by Southwest Windpower.

**THIS DRAWING IS FOR REFERENCE  
VARIATIONS MAY BE MADE IN  
ACCORDANCE WITH NEC GUIDELINES**

**ELECTRICAL CONNECTION OPTION #2**



- NOTES:**
1. EQUIPMENT SHALL BE INSTALLED IN ACCORDANCE WITH NEC ARTICLE 705.
  2. PROVIDE WARNING SIGN PER NEC 690-17 READING "WARNING-ELECTRIC SHOCK HAZARD-DO NOT TOUCH TERMINALS - TERMINALS ON BOTH THE LINE AND LOAD MAY BE ENERGIZED IN THE OFF POSITION".
  3. LABEL "WIND POWER SYSTEM DEDICATED KW-HR METER".
  4. LABEL SWITCH AS "WIND GENERATOR SAFETY DISCONNECT SWITCH".